

# Student Handbook

2026



**OREWA  
COLLEGE**

# Contents

|  |    |
|--|----|
| Principal’s Welcome .....                        | 1  |
| Term Dates & Day Structure .....                 | 2  |
| Learning at Orewa College .....                  | 3  |
| Ako Orewa .....                                  | 3  |
| Curriculum .....                                 | 3  |
| NCEA achievement data .....                      | 3  |
| Academic Pathway .....                           | 4  |
| Manaaki Orewa .....                              | 4  |
| Stationery & Course Contributions .....          | 4  |
| Communication, Reports & Devices .....           | 5  |
| Schoolbridge App .....                           | 5  |
| Email .....                                      | 5  |
| High Tide .....                                  | 5  |
| On the Horizon .....                             | 5  |
| Daily Notices .....                              | 5  |
| Reports & Interviews .....                       | 6  |
| Google Apps & Devices .....                      | 6  |
| Login Information .....                          | 6  |
| Digital Citizenship Agreement .....              | 6  |
| AI in school & Phone Policy .....                | 7  |
| Campus Map .....                                 | 8  |
| School Uniforms .....                            | 10 |
| Non-regulation Uniforms & Other Guidelines ..... | 13 |
| House System .....                               | 13 |
| Non-Regulation Uniform .....                     | 13 |
| Hair & Jewellery .....                           | 13 |
| Uniform Enforcement .....                        | 13 |
| Attendance, Absences & Leave .....               | 14 |
| Absences .....                                   | 14 |
| Planned Absences .....                           | 14 |
| Attendance .....                                 | 14 |
| Appointments .....                               | 14 |
| Late Arrivals .....                              | 14 |
| Rumaki .....                                     | 15 |
| Transport & Student Services .....               | 16 |
| Buses .....                                      | 16 |
| Pick Up .....                                    | 16 |
| School Canteen .....                             | 16 |
| Guidance .....                                   | 16 |
| Health Centre .....                              | 16 |
| Accident or Emergency Situation .....            | 16 |

# Welcome, Nau mai, haere mai

## Principal’s Welcome

**We are proud of our school and the contribution it makes to our community. At Orewa College we are committed to providing a supportive and challenging centre of learning, where students are encouraged to achieve highly in their academic and extra-curricular pursuits.**

Our vision is to create rich opportunities for rangatahi (youth), nurturing confident, socially connected, and responsible young people. We believe in developing students with a strong sense of belonging, who grow to become well-rounded, motivated, and proud, who are prepared to navigate a fast-changing, complex world with creativity, purpose and resilience.

Starting at a new school is an important step, and we know it can bring a mix of excitement and nerves. At Orewa College, we look forward to welcoming our new students and supporting them as they find their place here. As a large Year 7-13 school, we can offer a wide range of learning and extra curricular opportunities, while still fostering a strong sense of belonging and community.

For detailed and up-to-date information, please visit our website [www.orewacollege.nz](http://www.orewacollege.nz)



**WIRI WARRINER**  
Tumuaki | Principal  
Orewa College



# Term Dates & Day Structure

## New Students Starting in 2026

All Year 7 students and new Year 8–13 students must attend school on **Thursday 29 January**.

### Term Dates for 2026

| TERM          | DATES                                       |
|---------------|---|
| <b>Term 1</b> | Thursday 29 January<br>– Thursday 2 April   |
| <b>Term 2</b> | Monday 20 April<br>– Friday 3 July          |
| <b>Term 3</b> | Monday 20 July<br>– Friday 25 September     |
| <b>Term 4</b> | Monday 12 October<br>– Wednesday 9 December |

### School Hours / Day Structure

|                                      |
|--------------------------------------|
| <b>Block 1</b> – 8.50am (Friday 9am) |
| <b>Form Time</b> – 9.55am            |
| <b>Block 2</b> – 10.15am             |
| <b>Interval</b> – 11.10am            |
| <b>Block 3</b> – 11.45am             |
| <b>Block 4</b> – 12.45pm             |
| <b>Lunch</b> – 1.40pm                |
| <b>Block 5</b> – 2.20pm              |
| <b>End of day</b> – 3.15pm           |



# Learning at Orewa College/Ako Orewa

## Ako Orewa

### Building Responsible, Confident & Motivated Learners

At Orewa College, we are committed to developing young people who are confident, responsible, and motivated to succeed. Central to this is Ako Orewa, our learning philosophy.

Ako means both to teach and to learn, and at Orewa College it represents the shared journey between students, teachers, and whānau. Through Ako Orewa, students learn to take ownership of their learning, reflect on their progress, set meaningful goals, and build the skills needed for lifelong growth. It encourages a “can-do” attitude, supports collaboration, and helps students understand not just what they are learning, but why it matters.

By working together, at school and at home, we prepare our learners to thrive academically, socially, and personally, both now and in the future.

## Curriculum

In years 7–10, Orewa College students take part in a Middle School programme designed to build strong foundations for future learning. All students study the five core subjects: English, Mathematics, Science, Social Studies, and Health & Physical Education, while also experiencing a wide range of learning through Art, Performing Arts, Languages, and Technology.

Aligned with the values of Ako Orewa, this balance ensures every student develops a breadth of knowledge, skills, and experiences, helping them grow into confident, motivated, and well-rounded learners.



In years 11–13, students select courses to help them obtain their NCEA Certifications. Students are expected to continue with Mathematics until the end of Year 11, and English until the end of Year 12. Level 1 NCEA is treated as an introduction to the NCEA system, with a maximum of 10 credits on offer per course. Level 2 and 3 NCEA are designed to support students in their pursuit of qualifications that will help them towards their next steps in life.

## NCEA Achievement Data 2024

**87%** of students achieved NCEA Level 3

**60%** of students achieved University Entrance

**6** NZQA Scholarships earned

# Learning at Orewa College

## Academic Pathway

At Orewa College, students may opt into the Academic Pathway aimed at supporting and extending students that are excelling academically.

In the Middle School (Years 7-10), students build strong foundations in core subjects while also exploring a wide range of learning areas. Extension opportunities are available in the classroom, alongside optional enrichment workshops in reading, writing, maths, and science.

By Year 10, students may also begin up to two Level 1 NCEA courses, helping them prepare for senior study.

In the Senior School (Years 11-13), students gradually specialise, with opportunities to study Level 1-3 NCEA courses, Scholarship subjects, and even tertiary papers.

This pathway ensures students are supported to grow step by step, making informed choices while developing the skills and confidence to achieve their personal goals.



## Manaaki Orewa



- Respect for ourselves.
- Respect for others.
- Respect for the environment.

These values form our expectations of student behaviour and reinforce our commitment to restorative practice where students learn the consequence of their actions and establish more positive behaviour. Students will become familiar with Manaaki Orewa soon after they join Orewa College. We positively promote these values throughout events and activities. All members of our school, staff and students are Guardians of Manaaki Orewa (Ngā kaitiaki o Manaaki Orewa).

## Stationery & Course Contributions

**Caregivers will receive a 'Course Confirmation' email in January. This will contain information about the courses your child has selected, stationery, and payment information.**

All trips, sports and activities must be fully paid for in advance. Satisfactory attendance, course work and behaviour are requirements for trip eligibility.

The school donation is \$430.00 per student for the year and is tax

deductible. You may specify which of the following you would like your donation to be used for: Performing arts/music, sports, cultural groups, IT facilities, student leadership or library. These opportunities are only possible with school donations.

Payments can be made at Accounts or via the App or online (12-3109-0012666-00, please enter your child's ID number in 'reference'. Any cases of financial hardship, please email: [hardship@orewacollege.nz](mailto:hardship@orewacollege.nz)

# Communication, Reports & Devices

## Schoolbridge App



We recommend that you and your child get the free Schoolbridge App.

On the App you can:

- Receive important School Alerts
- Report absences
- Check daily notices and school calendar
- Approve permission slips
- Book academic conferences and more

## Email

We communicate with caregivers by email. Parents/caregivers login for SchoolBridge is based on the email address we have for you. It is essential that you advise us if your email address changes. You can check all other contact details we have for you via the SchoolBridge App.

## High Tide

Sent every Monday, High Tide is our weekly celebration of student success in academics, sport, arts, culture, leadership, and service. Read it in your inbox or on our website.



## On the Horizon

Sent every Sunday, On the Horizon is our weekly update for parents, caregivers, and whānau with key dates, announcements, and news across school life.

## Daily Notices

Daily Notices share activities, sports, arts, and events. Students read these in form time, and caregivers can view them on the Orewa College app or Web Portal.



# Communication, Reports & Devices

## Reports & Interviews

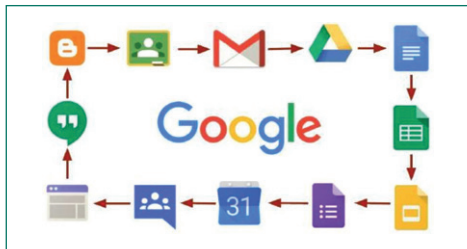
Progress reports will be published once a term. These reports are aimed at letting you know how your young person/child is engaging in their learning, how they are generally tracking academically, and to what extent they are embodying Manaaki Orewa.

A Record Of Learning is also published twice a year, at the end of each semester, with NCEA Achievement Progress, or Curriculum Learning Progress. These assessment grades are also available to see on the parent portal throughout the year.

Academic Conferences are held in terms 1 and 3 and provide an opportunity for parents/caregivers to meet with their child's teachers to discuss their progress at school.

## Google Apps & Devices

### Google Apps



At Orewa College we use Google Workspace apps, including Drive, Classroom, Calendar, Docs, Slides, Sheets, and Gmail. Teachers use Google Classroom to share tasks and communicate with students. To support efficient communication, all students are expected to check their school email daily, ideally at the start of the school day.

## Devices

Any Chromebook or Laptop that is less than 5 years old and is capable of connecting to the internet is suitable.

- Middle School (Years 7–10): the most common devices are Chromebooks.
- Senior School (Years 11–13): the most common device is a laptop (Windows or Mac).

## Login Information

When students start at Orewa College they are issued a student ID, which is used to log in to the school network and Google. Logins are provided on the first day, with usernames in the format studentID@orewacollege.nz (e.g. 12345@orewacollege.nz). As part of developing self-management skills, students are expected to share this login information with their caregivers.

## Digital Citizenship Agreement

Our Digital Citizenship Agreement can be found on our website Information/School Policies. Students sign this Digital Citizenship Agreement each year.



# AI in School & Phone Policy

## AI in school

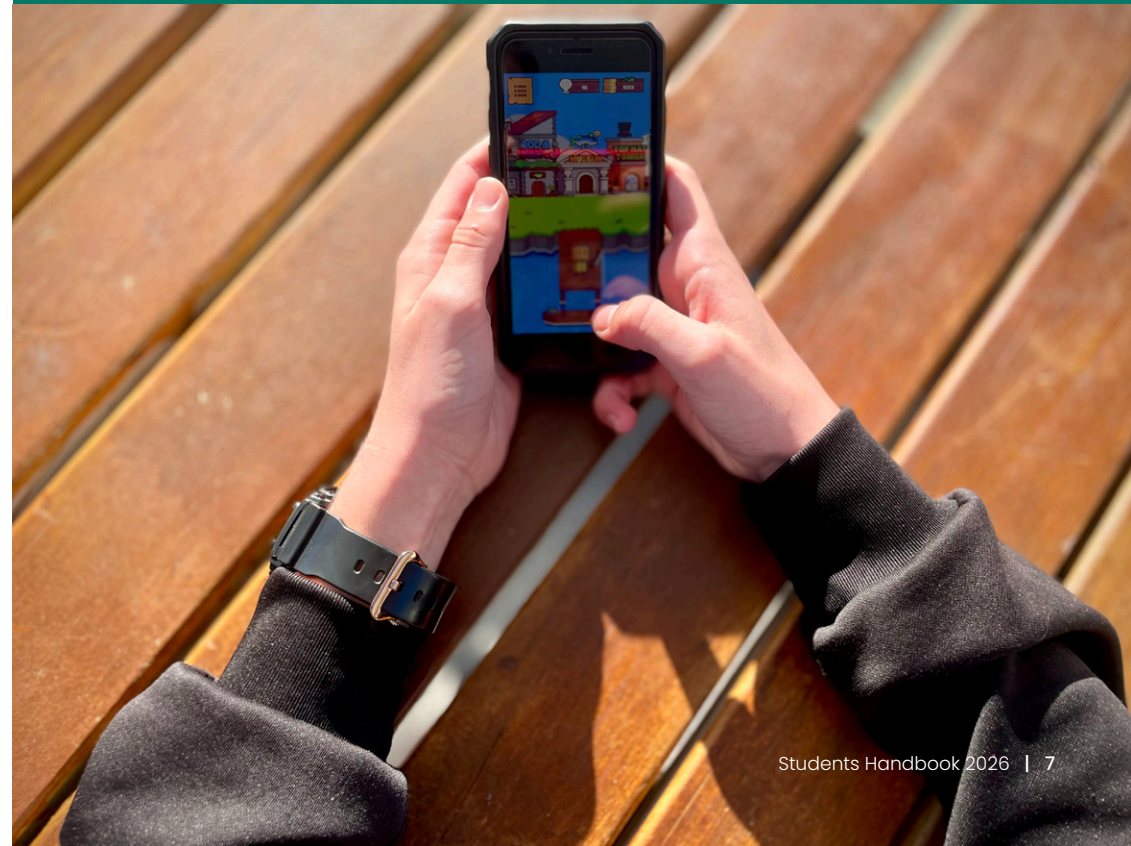
At Orewa College, digital technology is an important tool in learning, and Artificial Intelligence is no exception. Just as Ako Orewa encourages students to take ownership of their learning, reflect, and set personal goals, our AI guidelines support students to use emerging tools responsibly and thoughtfully.

AI is never a substitute for core skills or high-stakes assessments, where honesty and independent thinking are essential. Instead, it can be used in guided ways, such as for planning, spelling, or refining ideas, when students show understanding, apply critical thinking, and acknowledge its use.

In this way, AI becomes another tool within Ako Orewa, helping students develop confidence, responsibility, and a “can-do” attitude, while preparing them for a future where working alongside AI will be part of everyday life.

## Phone Policy

There is a strict no phone policy at Orewa College, and students are expected to keep their phones turned off and in their bag from the first bell of the day (8:45am) until the last bell of the day (3:15pm). Occasionally a teacher might invite students to use their phone for a learning activity but this is a very rare occasion.



# Campus Map



# School Uniform

## Uniform Regulations

All students are required to wear the correct uniform at school, travelling to and from school, and when attending school functions or representing the school. If students have a genuine reason for not being able to wear the correct uniform they must bring a note from their caregiver to the Deans' Hub who may issue a uniform pass or loan pieces of uniform.

## Year 7–10 Uniform

Orewa College logo green polo shirt with the choice of:

- Orewa College school shorts
- Orewa College trousers (male or female)
- Orewa College tartan skirt
- Orewa College long skirt
- Orewa College lavalava
- Orewa College black sweatshirt with logo
- Plain black socks (visible above the ankle)



Shorts



Skirt



Long Skirt



Socks



Lava Lava



Long Trousers



Green polo shirt



Black Sweatshirt

## House Colours / PE Gear (All Years)

- Orewa College logo PE shorts & house shirt.
- Orewa College black gym leggings (optional).



PE Shorts



MCLAREN



SHEPPARD



BLAKE



NEPIA



BATTEN

All House fundraising goes towards Hibiscus Coast Community House.

## Year 11–13 Uniform

Orewa College logo white shirt with the choice of:

- Orewa College school shorts
- Orewa College trousers (male or female cut)
- Orewa College grey skirt
- Orewa College long skirt
- Orewa College lavalava
- Orewa College black sweatshirt with logo
- Orewa College plain black socks (visible above the ankle)



Shorts



Skirt



Long Skirt



Lava Lava



Long Trousers



SS/LS Shirt



SS/LS Shirt



Socks



Black Sweatshirt

## Additional Items

Orewa College black gym leggings.

White thermal may be worn under senior shirt, black thermal may be worn under middle school polo shirt PE top.

Orewa College sun hat is recommended in Terms 1 and 4.

Orewa College winter jacket / Orewa College windbreaker / Plain black scarf.



Softshell Jacket



Sun Hat

Windbreaker

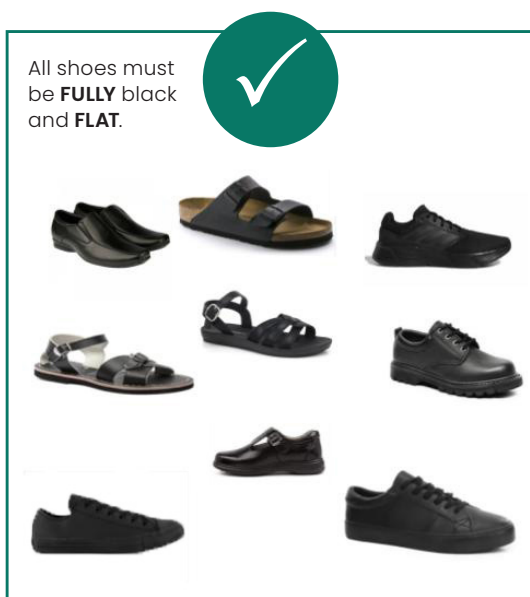
### UNIFORM SHOP

5 Tamariki Ave, Orewa or  
[oc.uniformgroup.co.nz](http://oc.uniformgroup.co.nz)

# School Uniform

## Shoes

Shoes are either black sandals without socks or plain black shoes worn with socks or winter weight stockings. They must be plain, black and flat. No patterns, no platforms, no boots, no buckles, no labels, no tags. We strongly recommend polishable leather shoes due to durability and weather protection. Covered shoes are compulsory for all Science and Technology students working in a laboratory or workshop.



## Alternative Jerseys

Year 13 students may be given permission to wear a graduate jersey. Students who are involved in an ongoing school extra-curricular group may be given permission to wear the Orewa College extra-curricular sweatshirt.

No garments other than approved uniform items are to be visible. Clothing must be worn appropriately and in a good state of repair. More uniform information can be found on our website information/Uniform.

The Orewa College uniform is available from the Uniform Group shop that is located at 5 Tamariki Ave, Orewa. The Uniform Shop website is [oc.uniformgroup.co.nz](http://oc.uniformgroup.co.nz) or phone 09 600 5370.

# Non-Regulation Uniform & Other Guidelines

## Non-Regulation Uniform

Students who arrive at school in non-regulation uniform should have a note from their parent/caregiver explaining that repairs or replacements are underway. This note should be taken to the Deans' Hub.

Should a student wish to wear a non-regulation item of religious or cultural significance eg. crucifix, pounamu, that will be visible, their parent/caregiver needs to clarify this in writing to the Principal, [principal@orewacollege.nz](mailto:principal@orewacollege.nz) to ensure there is no health and safety risk.

Any non-regulation uniform or jewellery worn without prior arrangement will be confiscated and only returned to students on the last week of the term or to parents/caregivers directly. Items not collected will be donated to charity at the end of each term. Orewa College accepts no responsibility for these items.

## Other Restrictions

No makeup, no nail extensions / polish, no inappropriate body markings are permitted.

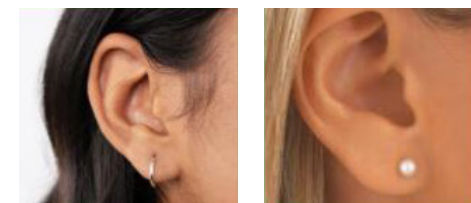
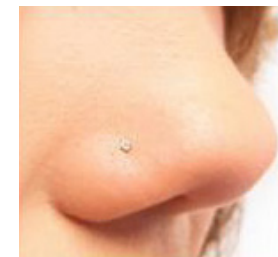
## Hair & Jewellery

### Hair

Hair should be neat and tidy and of one natural hair colour and reasonable style. Face and eyes must be visible. Long hair should be tied back in all practical classes. Hair bands, ties etc. must be in school colours of black, green or white. Although Year 13 students are not required to be clean shaven, they are expected to look tidy, and Senior Management may request students be clean shaven when representing the school. All other year level students must be clean shaven.

## Jewellery

Allowed – one discreet nose stud (not ring). More than one pair of earrings is allowed – they must be sleepers or studs. Allowed – 1 watch, one plain ring. No other jewellery (bracelets/anklets etc) is permitted unless agreed under non-regulation uniform (above). Covering piercings is not acceptable.



## Uniform Enforcement

### Determining Appropriateness

Our uniform represents pride and belonging. The Principal and Senior Leadership Team support students in meeting the uniform policy, ensuring everyone can represent the school consistently and with confidence. If a student is not in the correct uniform, arrangements may be made for them to continue their learning under the guidance of the Senior Leadership Team.

# Attendance, Absences & Leave

## Absences

We ask parents/caregivers to advise the school of absences by emailing [absences@orewacollege.nz](mailto:absences@orewacollege.nz) or by using the SchoolBridge App.

If a student is marked absent for the morning, for an unknown reason, a text message will be sent to the first primary caregiver's mobile phone. Please text back a reply. We are only able to receive replies to these messages we send on the day. Unexplained absences will be treated as truancy.

## Planned Absences

If a student is to be absent from school during the Term, we need a letter from the parent/caregiver in advance, giving the dates and reason for the planned absence. Please email this to [leave@orewacollege.nz](mailto:leave@orewacollege.nz).

Students are likely to be ineligible for an NCEA assessment that is held during their absence.



## Attendance

Attendance is expected to be at least 90%. Poor attendance affects eligibility for inclusion in restricted courses, school trips and activities.

Your child's attendance can be monitored on the SchoolBridge App. The percentage of attendance is printed on student reports. The percentage is calculated on students being present at school or on a school based activity. Explained absences (including sickness), will lower this percentage.

## Appointments Leave

(Doctor, Dentist, Physio, etc)

If your child has an appointment, please order an "exit pass" via the Schoolbridge App in advance. A pass will be emailed to the student so they can show their teacher if they need to leave during class time.

Year 7 and 8 students leaving during the school day must be collected by a listed caregiver (or pre-arranged authorised adult) from the Deans' Hub.

## Late Arrivals

Students need to sign into the Deans' Hub if they arrive late to school with a note from their caregiver explaining the lateness.



# Rumaki

Orewa College is introducing its first Rumaki Reo Māori programme in 2026 for Year 7 and Year 8 taurira.

This Level 1 total immersion pathway will deliver approximately 80 percent of learning in te reo Māori, grounded in te ao Māori, mātauranga Māori and tikanga Māori. Tamariki in the programme will also engage in English-medium learning such as reading, writing, mathematics, and specialist subjects including the arts, sciences, technology and physical education. Rumaki taurira will fully participate in all Year 7 and Year 8 activities, with access to sporting, cultural, leadership and extracurricular opportunities.

The programme is open to learners regardless of current proficiency in Te Reo, scaffolding and whānau support will help build confidence. Orewa College will start with two Rumaki classrooms and welcomes applications from both in-zone and out-of-zone whānau as a special programme. Prospective ākonga and their whānau are invited to kōrero with kaiako Māori after expressing interest. We warmly welcome whānau passionate about Māori-medium education and revitalising te reo Māori.

# Transport & Student Services

## Transport

### Buses

Orewa College uses Bayes Coachlines for local bus services and Ritchies Coachlines for Rural bus services. For more information on bus transport including route information, timetables, school transport assistance policies please visit our website under Info / Bus Information or email [bus@orewacollege.nz](mailto:bus@orewacollege.nz).

### Pick Up

During peak times, there are stopping restrictions on both Riverside Road and Hatton Road. Please use Centreway Road if dropping your child to school. Students must not be dropped off or picked up within the school grounds. If you must enter the school grounds (picking up a sick child, etc) the 10km/hr speed limit must be adhered to.



## Student Services

### School Canteen

There are two canteens at Orewa College, one for Year 7 & 8 and one for Year 9-13 students. Students can pre-order food before school for interval and lunch.. Eftpos is available. The canteen menu can be found on [tuckr.co.nz](http://tuckr.co.nz)



### Guidance

Our Guidance counsellors are available to provide confidential counselling for students. We aim to work collaboratively within our strong school pastoral team to support students. The Guidance Department is located in Student Reception. Appointments can be made by emailing [guidance@orewacollege.nz](mailto:guidance@orewacollege.nz).



### Health Centre

Health Centre (located at Student Reception) is open from 8.40am - 3.20pm for



accidents and medical emergencies and is normally staffed by a Nurse. Students must have a note from their teacher if visiting the Nurse during class time. All students must see the Nurse before they leave school to go home for medical reasons or they are injured at school. Any regular approved medication must be administered by the Nurse, and the medication must be brought to the Nurse by a caregiver and the appropriate form completed. Please contact the Nurse with medical changes for your child.

### Accident or Emergency Situation

If the school is unable to contact a parent/caregiver in an accident or emergency situation, or if the accident or emergency is serious, the student will be taken either to a nearby medical centre or an ambulance will be called. (There may be costs that a parent/caregiver must meet). Please ensure you keep your child's emergency contact details up to date.



# Ready to Learn



## Be Punctual



## Phone in Bag



## Equipment Ready



## Department Contacts

**Main Admin:** [admin@orewacollege.nz](mailto:admin@orewacollege.nz)

**Accounts:** [accounts@orewacollege.nz](mailto:accounts@orewacollege.nz)

**Careers:** [careers@orewacollege.nz](mailto:careers@orewacollege.nz)

**Deans:** [deans@orewacollege.nz](mailto:deans@orewacollege.nz)

**Guidance:** [guidance@orewacollege.nz](mailto:guidance@orewacollege.nz)

**Library:** [librarystaff@orewacollege.nz](mailto:librarystaff@orewacollege.nz)

**Nurse:** [nurse@orewacollege.nz](mailto:nurse@orewacollege.nz)

---



**OREWA  
COLLEGE**

76 Riverside Road, Orewa 0931  
PO Box 345, Orewa, 0946, Auckland, New Zealand

+64 9 427 3833 | [admin@orewacollege.nz](mailto:admin@orewacollege.nz)

**[www.orewacollege.nz](http://www.orewacollege.nz)**

---